

Abstract

Muscle Activity of Low Back Muscles During Isometric Back Extension Exercises

Yu Won-gyu, B.H.Sc., P.T.

Dept. of Rehabilitation Therapy, The Graduate School, Yonsei University

Jung Young-jong, B.H.Sc., P.T.

Dept. of Physical Therapy, Sanji University Oriental Medical Hospital

Lee Jae-ho, M.P.H., P.T.

Dept. of Physical Therapy, Seoul Health College

Kim Chang-in, B.H.Sc., P.T.

Dept. of Rehabilitation Therapy, The Graduate School, Yonsei University

Back extension exercises have been used for rehabilitation of the injured low back, prevention of injury, and fitness training programs. However, excessive loading on low back can exacerbate existing structural weakness. The purpose of this study was to compare muscle activity of low back muscles during back extension exercises. Twenty healthy male subjects were evaluated. Electromyographic (EMG) activities of low back muscles at L1 and L5 level were recorded during seven different back extension exercises and two reference tasks by surface EMG and saved for data analysis. Reference tasks of lifting 20% and 40% of their body weight were included for comparison. The result were as follows: 1) Single-arm extension and single-leg extension exercises on quadruped position appeared to constitute a low-risk exercise for initial extensor strengthening. 2) When arm extension was combined with contralateral leg extension on quadruped position, EMG activities of low back muscles were increased. 3) EMG activity of low back muscles was highest during the trunk extension exercises on prone position. 4) EMG activities of low back muscles during arm and leg extension exercises on quadruped position were less than those of reference task of lifting 40% of their body weight. These results have important implications for progressive back extensor muscle

strengthening exercises in patients with back pain.

Key Words : Electromyography; Extension exercise; Lumbar extensor muscle; Rehabilitation.

가 back dynamometer
가 (Mayhew Rothstein,
, 1985)가 ,
24 (, 2000; ,
1998),
(Frymoyer Cats-Baril, 1991; Graves 가 (, 1994).
, 1990). ,
(Anderson , 1983; Deyo Tusi-
Wu, 1987; Troup, 1984; Waddell, 1987). 가
(Fordyce , 1986), Anderson , 1977; Nouwen , 1987).
(, 1997; Cassisi , 1993;
Hultman , 1993; Mayer , 1985; Shirado
, 1995). (Graves , 1990).
가 (Polatin , 1988). 1993), (Joynt ,
(Langrana , 1980; Mayer 가 가
, 1985; Mayer , 1986), Pope (1985) 1998). (Peach McGill,
가 Risch (1993)
가
가
(Nachemson
Lindh, 1969).
가

(Manniche, 1998; Mayer, 1985; Risch, 1993).

Mayer (1999) VARC (Variable Angle Roman Chair)

가
가

Callaghan (1998)

가
가

(surface EMG)

7가

1.

1

20

가

2.

1995).

3 cm

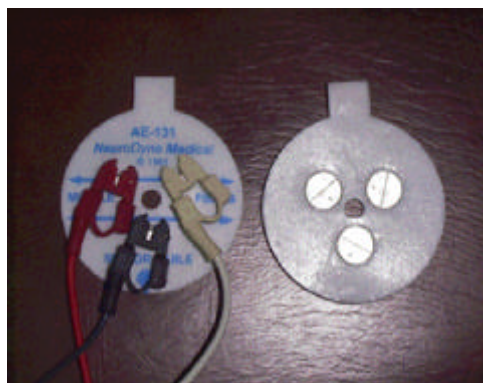
(multifidus)

MP100SW (BIOPAC System Inc., USA)

(electrode) AE-131 circular surface EMG disposable electrode (NeuroDyne Medical Corp. MA. USA)

(1). 12 mm

3, 20 mm



1. AE-131 circular surface EMG disposable electrode

3.

7가

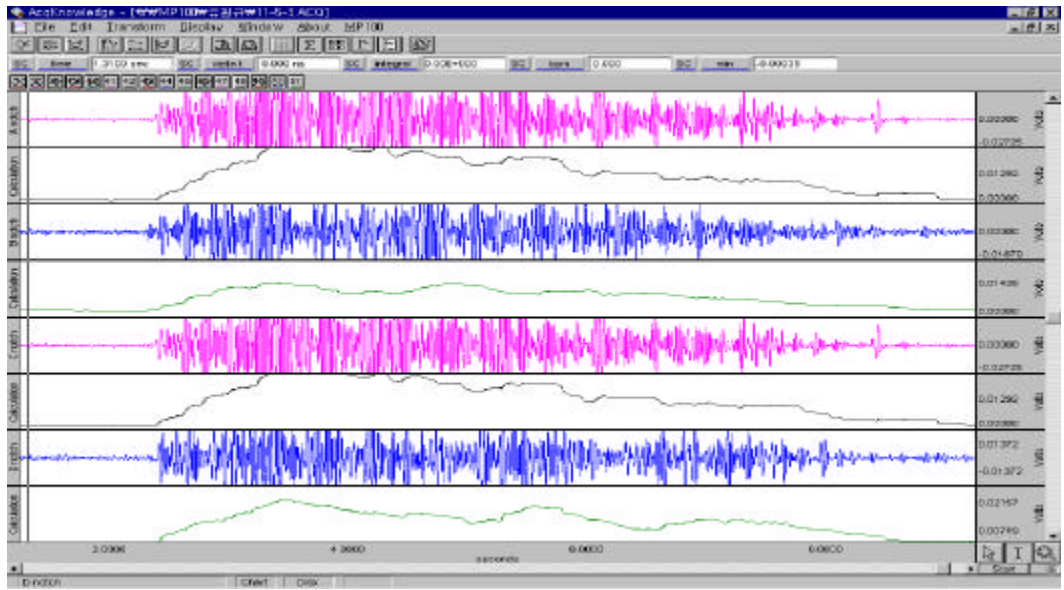
2가

1

3 cm

(Roy,

5

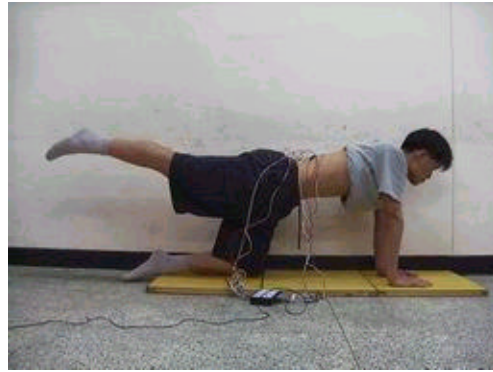


2.

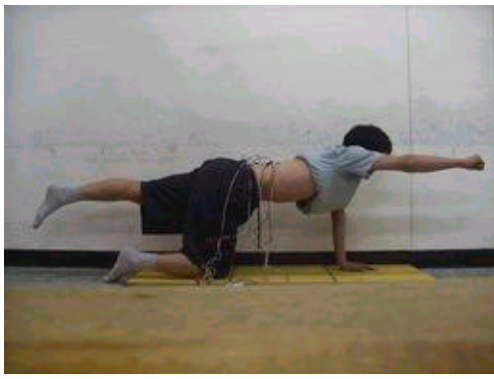
6 , 1 <6>
 5 (8), <7>
 . 6
 “ ” (9).
 , <1>
 20% (10),
 3 . <2>
 3 40%
 , <1> <2>
 . 가
 . 20% 40%
 <7> 가 ,
 (maximum voluntary contraction; 100
 %MVC) . <1>, <2>, <3>, <4>
 , <5>, <6>, <7>
 . <1>
 (3), <2>
 (4), <3>
 (5), <4>
 (6),
 <5> 가
 (7),
 10 cm (Blackburn
 Portney, 1981). 가
 3 cm
 .



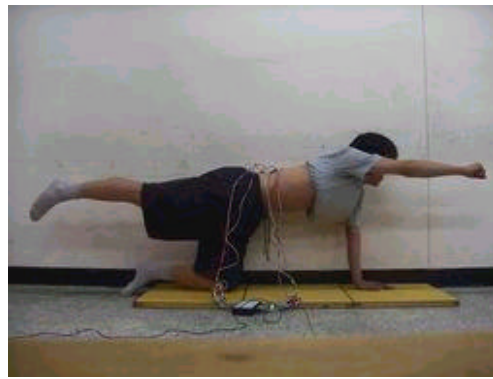
3. <1>



4. <2>



5. <3>



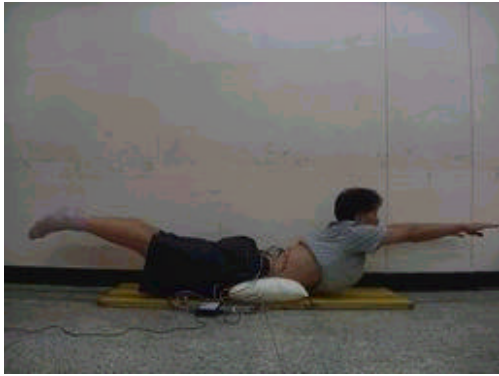
6. <4>



7. <5>



8. <6>



9. <7>



10.

4.

band pass filter (low; 40 Hz, high ; 250 Hz), notch filter(60 Hz) Rectify RMS (Root Mean Square) smoothing gain 1000 , 500 sample/sec (2). Acqknowledge 3.53 (Biopac System Inc. CA. USA)

5.

SPSS/Win (version 8.0) , GraphPad Prism . (single-factor repeated measure designs) (Bonferroni's correction) t- (paired t- test) . .05

1.

(n=20)

	±	
()	26.60 ± 4.08*	21 32
(kg)	70.45 ± 6.77	60 82
(cm)	175.60 ± 4.08	167 183

* ±

1. 67.54% , 59.42% ,
 <6> 86.00% ,
 77.07% (2).
 (1). (%MVC)
 26.0 , 가 <1> ,
 70.4 kg, 175.6 cm . <3>, <4>, <5>, <6>
 가
 2. (p<.05, p<.01), <2> (p
 (%MVC) 가 20% (p
 <.01),(11).
 <7> 33.36%, 32.49% ,
 (100 %MVC) 40%
 , <1> 28.48% , 15.56% , <2> 77.12% ,
 19.12% , 76.59% , 가 (p>.05),(3).
 29.95% . <3> 40.16% , 22.64%
 , <4> 54.05% ,
 34.41% . <5>
 2. (%MVC) (n=20)

	±	±	t
1	28.48 ± 9.04	15.56 ± 4.44	6.951**
2	19.12 ± 4.78	29.95 ± 5.86	- 10.236**
3	40.16 ± 11.87	22.64 ± 6.46	9.488**
4	54.05 ± 16.75	34.41 ± 13.60	8.264**
5	67.54 ± 11.28	59.42 ± 10.63	2.305*
6	86.00 ± 10.12	77.07 ± 14.45	2.427*
7	100.00 ± .00	100.00 ± .00	- 1.015

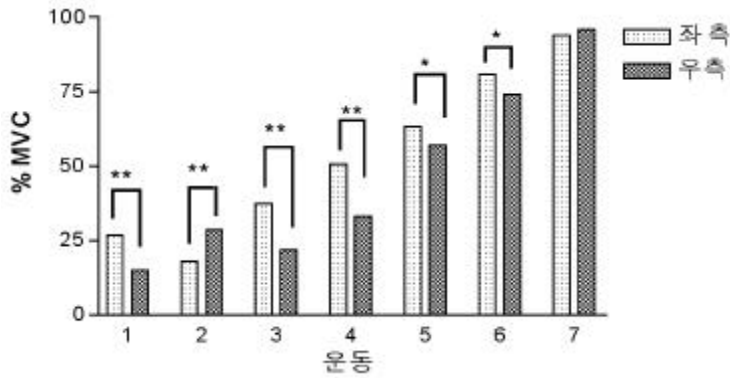
*p<.05, ** p<.01

3. (n=20)

	±	±	t
1	33.36 ± 10.07	32.49 ± 9.17	- .046
2	77.12 ± 18.58	76.59 ± 18.93	- 1.157

4.	(%MVC)		(n=20)
			F
106778.9	6	17796.4	228.2**
117657.1	6	19612.5	259.6**

**p<.01



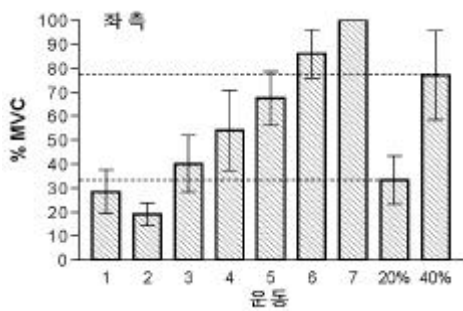
* p< .05, ** p< .01

11. (%MVC)

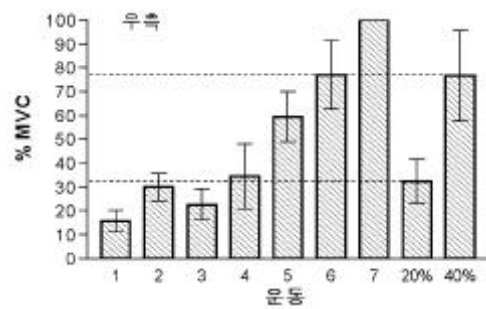
3. (%MVC)
가

4. (%MVC)
7가 20%, 40%

(p<.01), 20% <1>
가 <2> , <1>, <2>



12. (%MVC)



13. (%MVC)

<3> 가 <3>, <4>, <5>, <6>, <7>
 . 40% 가 .
 <6> <7> , Callaghan (1998)
 <7>
 , <6> 가
 (,
 12),(13). 가
 . Arokoski (1999)

VI.

, 가 .
 가
 .
 ,
 (Handa , 2000). <1>, <2>, <3>,
 가 <4> . <1>,
 <3>, <4>
 (Carpenter Nelson, 1999; Parkkola , 가 , <2>
 1992; Taimela Harkapaa, 1996). 가 .
 Callaghan (1998)
 가
 (Nachemson , 1969). , 가
 7가 , 가
 가
 ,
 20% 40% <2>
 가 ,
 <3> 가 .
 가 가 <1>
 <1> <4>
 가
 <3>, <2>, <4>, <5>, 가
 <6>, <7> 가 .
 가
 <2> 가 <1>, <2>, <3>, <4>
 , <1>, <5>,

<6>, <7>

<1>, <2>, <3>, <4>

<5>, <6>

가

가

가

가

Mayer (1999) VARC (variable angle Roman chair) (torque)

가

가

가

. Nouwen

가 가

, (1987)

가

가

Andersson (1977) 3

가 가

가 가

가

Callaghan (1998)

1 5

3 cm

10 kg

60°

40%

20%,

가

.(Floyd Silver, 1995; Nouwen, 1987; Valencia Munro, 1985; Wolf, 1979).

, <1>

1

5

<2>

<1>, <2>, <3>

20%

가

<1>, <2>, <3>, <4>, <5>

(Moritani Muro, 가

40%

가

가

(Floyd Silver, 1995; Sihvonen, 1988). Rozendal Meijer(1982)

7 가

20

V.

(%MVC)

7가

가

가

20%

40%

가

가

. 1997;15:304-309.

가. . 2000; 18:181-190.

. 1998;22(1):68-76.

가. . 1994;18:248-255.

. 1998;16:411-417.

Anderson GBJ, Jonsson B, Ortengnen R, et al. Quantitative electromyographic studies of back muscle activity related to posture and loading. *Orthop Clin North Am.* 1977;8:85-96.

Andersson GBJ, Svensson HO, Oden A. The intensity of work recovery in low back pain. *Spine.* 1983;8:880-884.

Arokoski JPA, Kankaanpaa M, Valta T, et al. Back and hip extensor muscle function during therapeutic exercises. *Arch Phys Med Rehabil.* 1999;80: 842-850.

Blackburn SE, Portney LG. Electromyographic activity of back during Williams' flexion exercises. *Phys Ther.* 1981;61:878-885.

Callaghan JP, Gunning JL, McGill SM. The relationship between lumbar spine load and muscle activity during extensor exercises. *Phys Ther.* 1998;78:8-18.

Carpenter DM, Nelson BW. Low back strengthening for the prevention and

- treatment of low back pain. *Med Sci Sports Exerc.* 1999;31:18-24.
- Cassisi JE, Robinson ME, O'Conner P, et al. Trunk strength and lumbar paraspinal muscle activity during isometric exercise in chronic low back pain patients and controls. *Spine.* 1993;18:245-251.
- Deyo RA, Tsui-Wu, YJ. Descriptive epidemiology of low back pain and its related medical care in the United States. *Spine.* 1987;12:264-267.
- Floyd WF, Silver PHS. The function of the erector spinae muscle in certain movements and posture in man. *Physiol.* 1995;129:183-203.
- Fordyce WE, Brockway JA, Bergman JA, et al. Acute back pain: a control group comparison of behavioral versus traditional management methods. *J Behav Med.* 1986;9:127-140.
- Frymoyer JW, Cats-Baril WL. An overview of the incidences and costs of low back pain (review). *Orthop Clin North Am.* 1991;22:263-271.
- Graves JE, Pollock ML, Carpenter DM, et al. Quantitative assessment of full range-of-motion isometric lumbar extension strength. *Spine.* 1990;15:289-294.
- Handa N, Yamamoto H, Tani T, et al. The effect of trunk muscle exercises in patients over 40 years of age with chronic low back pain. *J Orthop Sci.* 2000;5:210-216.
- Hultman G, Nordin M, Saraste H, et al. Body composition, endurance, strength, cross-sectional area, and density of MM erector spinae in men with and without low back pain. *J Spinal Disord.* 1993;6:114-123.
- Joynt RL, Findley TW, Boda W, et al. Therapeutic exercise. In: Delisa JA, Gans BM, eds. *Rehabilitation Medicine: Principles and Practice.* Philadelphia, Lippincott, 1993;15:504-509.
- Langrana NA, Lee CK. Isokinetic evaluation of trunk muscle. *Spine.* 1984;9:287-289.
- Manniche C, Hesselsoe G, Bentzen R, et al. Clinical trial of intensive muscle training for chronic low back pain. *Lancet.* 1998;24:1473-1476.
- Mayer JM, Graves JE, Robertson VL, et al. Electromyographic activity of the lumbar extensor muscle: Effect of angle and hand position during roman chair exercise. *Arch Phys Med Rehabil.* 1999;80:751-755.
- Mayer TG, Gatchel RJ, Kishino N, et al. A prospective short-term study of chronic low back pain patients utilizing novel objective functional measurement. *Pain.* 1986;25:53-68.
- Mayer TG, Smith SS, Keeley J, et al. Quantification of lumbar function. Part 2: Sagittal plane trunk strength in chronic low-back pain patients. *Spine.* 1985;10:765-72.
- Mayhew TP, Rothstein JM. Measurement of muscle performance with instruments. In: Rothstein JM, ed. *Clinics in Physical Therapy: Measurement in Physical Therapy.* New York, Churchill Livingstone, 1985.
- Moritani T, Muro M. Motor unit activity and surface electromyogram power spectrum during increasing force of contraction. *Eur J Appl Physiol.* 1987;56:260-265.

- Nachemson A, Lindh M. Measurement of abdominal and back muscle strength with and without low back pain. *Scand J Rehabil Med.* 1969;1:60-65.
- Nouwen A, Akkerneeken PF, Versloot JM. Patterns of muscular activity during movement in patients with chronic low back pain. *Spine.* 1987;12:777-782.
- Parkkola R, Kujala U, Rytokoski U. Response of trunk muscles in training assessed by magnetic resonance imaging and muscle strength. *Eur J Appl Physiol.* 1992;65:383-387.
- Peach JP, McGill SM. Classification of low back pain with the use of spectral electromyogram parameter. *Spine.* 1998; 23:1117-1123.
- Pope MH, Bevens TR, Wilder DG, Grymoyer JW. The relationship between anthropometric, postural, muscular, and mobility characteristics of males ages 18-55. *Spine.* 1985;10:644-648.
- Risch SV, Norvell NK, Pollock ML, et al. Lumbar strengthening in chronic low back pain patients: Physiological and psychosocial benefits. *Spine.* 1993;18: 232-238.
- Rozendal RH, Meijer OG. Human kinesiological electromyography: Some methodological problems. *Hum Mov Sci.* 1982;1:7-26.
- Roy SH, De Luca CJ, Emley M, et al. Spectral electromyographic assessment of back muscles in patients with low back pain undergoing rehabilitation. *Spine.* 1995;20:38-48.
- Shirado A, Ito T, Kareda K, Strax TE. Concentric and eccentric strength of trunk muscle: Influence of test postures on strength and characteristics of patients with chronic low-back pain. *Arch Phys Med Rehabil.* 1995;76:604-611.
- Sihvonen T, Partanen J, Hanninen O. Averaged (rms) surface electromyography in testing back function. *Electromyogr Clin Neurophysiol.* 1988; 28:335-339.
- Taimela S, Harkapaa K. Strength, mobility, their changes, and pain reduction in active functional restoration for chronic low back disorders. *J Spinal Disord.* 1996;9:306-312.
- Troup JDG. Causes, prediction and prevention of back pain at work. *Scand J Work Environ Health.* 1984; 10:419-428.
- Valencia FP, Munro RP. An electromyographic study of the lumbar multifidus in man. *Electromyogr Clin Neurophysiol.* 1985;25:205-221.
- Waddell G. A new clinical model for treatment of low back pain. *Spine.* 1987;12:632-644.
- Wolf SL, Basmajian JV, Russe CTC, et al. Normative data on low back mobility and activity levels. *Arm J Phy Med.* 1979;58:217-229.